



TOPWORK

ISO 9001 • CE

MONASET Tool Grinder

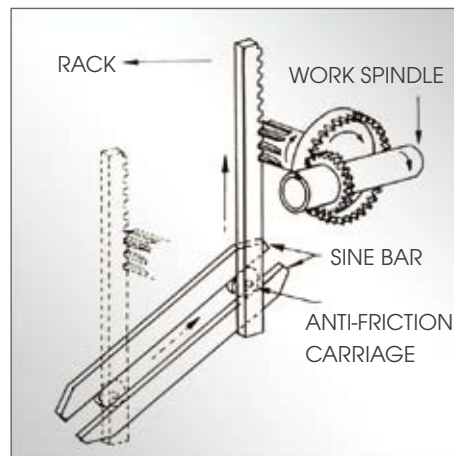
CM-2 · CM-A



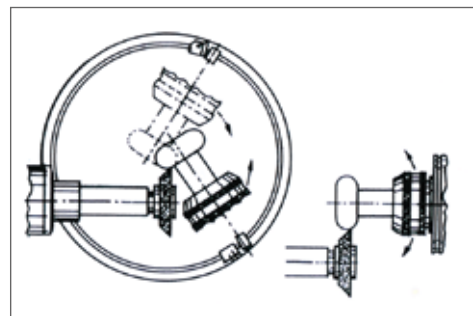
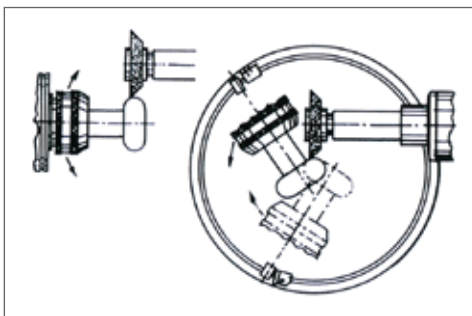
www.topwork.com.tw

FEATURE

- CM-A & CM-2 sharpen and recondition complex tool shapes and parts.
- Turntable and guide bar allows workpieces grinding from different direction.
- Turntable and workhead set can rotate horizontally for 210° angle.



Spiral mechanism generates infinitely variable leads.



MONASET & Tool Grinder

CM-2/CM-A GRINDING FUNCTION

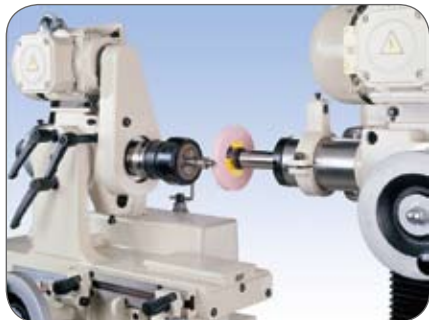
1. Screw slot surface grinding



2. Milling cutter end grinding



3. Grinding outer diameter



4. Side milling cutter grinding



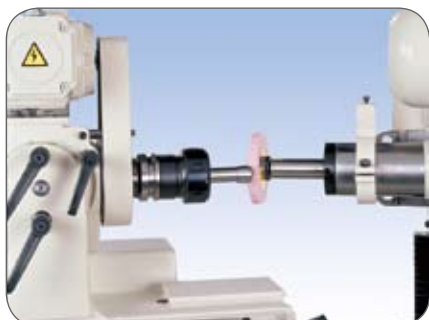
5. Formed milling cutter grinding



6. Centering device



7. ARC grinding

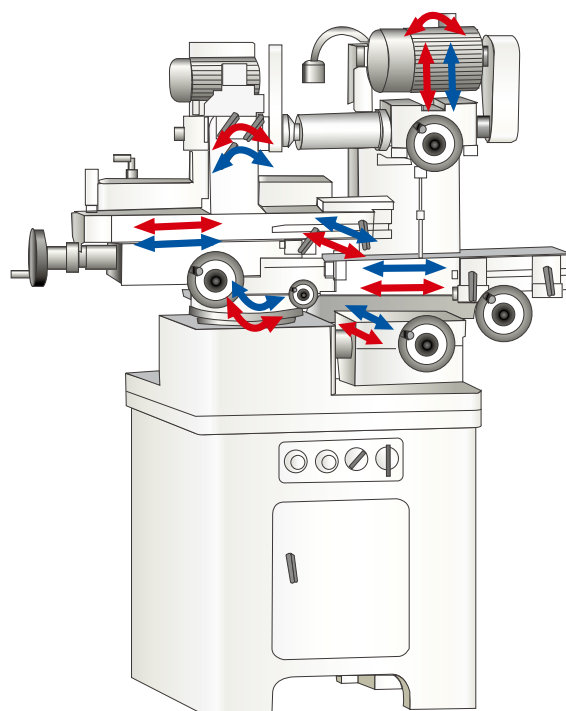


8. Vertical milling cutter grinding



CM-2

- Sharpen, and reconditions parts with complex shapes



■ CM-2 (8 axis) ■ CM-A (10 axis)



MONASET & Tool Grinder

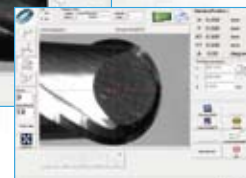
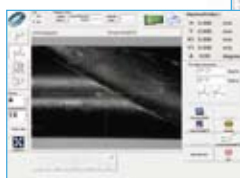
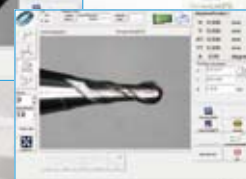
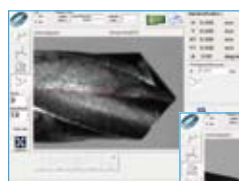
CM-A

CCD SYSTEM

- The CM-A is equipped with linear scale device on the X, Y and A axis.
- High precision camera device (C.C.D) provides convenience operation, accurate positioning, and increased quality control efficiency.
- It is ideal for precision grinding for angles, arc and re-sharpening, especially for small cutter.



- C.C.D. System
28~180 times
Variable focus
change



CUTTERWATCHER®

SMART
OPERATION

CM-2

CM-2 Standard Accessories

1. Wheelhead toothrest assembly with extension bar
2. Grinding wheel guards with extension bar
3. Front stock support
4. Straight cylindrical collets: (Please select "A" or "B")
 - (A) metric sizes: 5, 6, 8, 10, 12, 16, 20, 25 & 32mm
 - (B) inch sizes: 1/4, 5/16, 3/8, 7/16, 1/2, 5/8, 3/4, 7/8, 1, 1 1/8 & 1 1/4"
 Also including set of 3 taper collets:
 No. 2,3,4 morse taper
5. Set of (5) grinding wheel flanges.
 - (4) standard and (1) extension flange.
6. Diamond holder bracket
7. Wrench for workhead.
8. Toothrest centering gauge.
9. Adjustable tailstock support unit.
10. Spanner for grinding wheel
11. Levelling blocks
12. Standard Arbor
13. Screw driver
14. Set of wrenches.
15. Double-end spanner
16. Set of (4) index plates for spiral lead Mechanism 0,8,10 & 12 divisions.
17. Tool box
18. Oil bottle
19. Grinding wheel (one each of straight, flaring cup and dish shape)
20. Additional diamond truing tool with diamond nib.
21. Spring-loaded index pawl for workhead
22. 1/2" wheel flange and spanner

CM-2 Optional Accessories

1. Large cutter radius grinding attachment.
2. Four-inch universal six-jaw chuck for workhead.
3. Additional index plates for spiral lead indexing unit-24T.
4. Extended collect set with Wrench for smaller collect
 - Included in $\phi 3$ mm collet
5. Frequency inverter for grinding wheel spindle - 2 hp
6. Upgrading Grinding - wheel- spindle motor - 2 hp
7. Dust collector attachment



MONASET & Tool Grinder

CM-A

CM-A Standard Accessories

1. Wheelhead toothrest assembly with extension bar
2. Grinding wheel guards with extension bar
3. Front stock support
4. Straight cylindrical collets: (Please select "A" or "B")
(A) metric sizes: 5, 6, 8, 10, 12, 16, 20, 25 & 32mm
Also including set of 3 taper collets:
No. 2, 3, 4 morse taper
(B) inch sizes: 1/4, 5/16, 3/8, 7/16, 1/2, 5/8, 3/4, 7/8, 1, 1 1/8 & 1 1/4"
5. Set of (5) grinding wheel flanges.
(4) standard and (1) extension flange.
6. Diamond holder bracket
7. Wrench for workhead.
8. Toothrest centering gauge.
9. Adjustable tailstock support unit.
10. Spanner for grinding wheel
11. Levelling blocks
12. Standard Arbor
13. Screw driver
14. Set of wrenches.
15. Double-end spanner
16. Set of (4) index plates for spiral lead Mechanism 0,8, 10 & 12 divisions.
17. Tool box
18. Oil bottle
19. Grinding wheel (one each of straight, flaring cup and dish shape)
20. Additional diamond truing tool with diamond nib.
21. Spring-loaded index pawl for workhead
22. 1/2" wheel flange and spanner
23. Grinding attachment for large face milling cutter
24. 4" six-jaw chuck for workhead
25. Wheel flange with 2 collets for internal grinding
26. Wet grinding attachment with water proof equipment

CM-A Optional Accessories

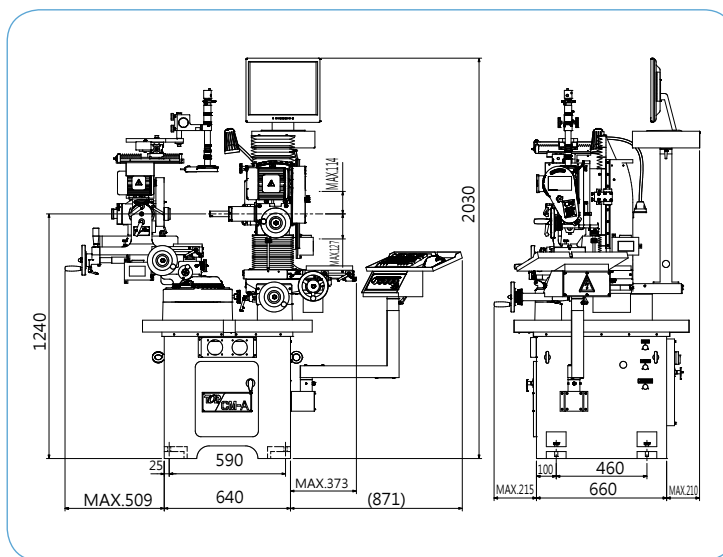
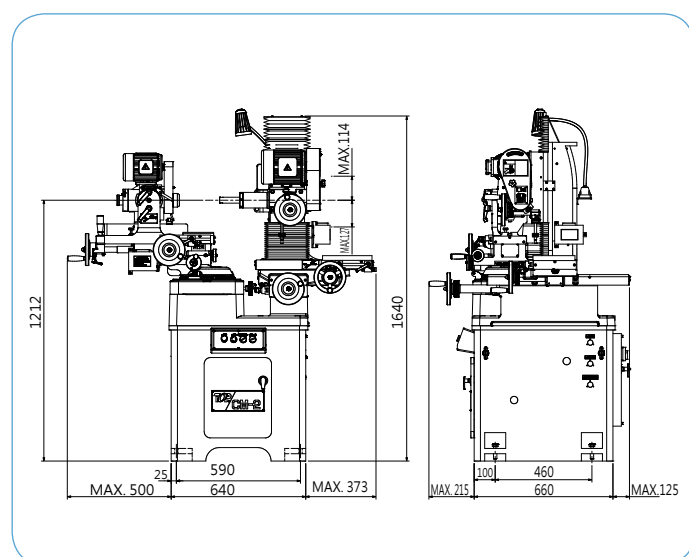
1. Frequency inverter for grinding wheel spindle - 2 hp
2. Extended collect set with Wrench for smaller collect Included in $\phi 3$ mm collet
3. Additional index plate for spiral lead indexing unit - 24T
4. Upgrading Grinding - wheel - spindle motor to 2 hp
5. Dust Collector

Machine Specifications

Workhead-	
Max. Swing diameter	304 mm
Max. Collet work diameter	32 mm
Min. Collet work diameter	5 mm
Max. Spiral angle	60°
Max. Distance between speak of spindle and center of tailstock	100 , 152 mm
Grinding wheel head -	
Grinding Diameter	100mm
Range-	
Workhead-	
Slide travel	130 mm
Offset slide travel	100 mm
Front of center	50 mm
Rear of center	50 mm
Angle adjustment of Workhead-	
Rotation of Horizontal plane	± 105° (210°)
Rotation of Vertical plane	± 40°

Grinding wheelhead-	
Slide travel	110 mm
Vertical Slide travel	240 mm
Cross slide travel	170 mm
Spindle Speeds-	
Workhead speed	50 HZ / 370 rpm 60 HZ / 440 rpm
Grinding wheelhead speed	4000, 6000, 8000 rpm
Motor-	
Workhead	1/4 HP (0.186 kw)
Grinding wheelhead	1/2 HP (0.373 kw)
Dimension-	
Floor space	CM-2 / 1600 x 1150 x 1650 mm CM-A / 2100 x 1150 x 2050 mm
Weight	CM-2 / 860 kg CM-A / 1030 kg

Dimensions



All specifications are subject to change without prior notice.



TOPWORK Industry Co.,Ltd.

No.9, 6th Road, Taichung Industrial District, Taichung 40755, Taiwan.

TEL : 886-4-23581558 FAX : 886-4-23581268 E-mail : topwork@ms12.hinet.net

www.topwork.com.tw